

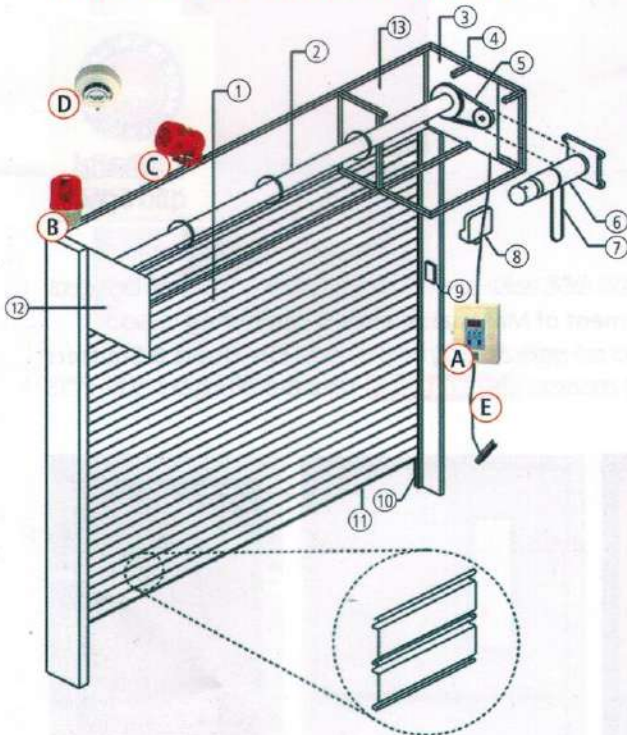


**THREE SINHA  
FIRE DOOR**

# FIRE RESISTANT AUTOMATIC SHUTTERS



## FIRE SHUTTER ASSEMBLY



1. Shutter Panel 2. Shaft 3. Mounting Bracket 4. Motor Retaining Frame
5. Roller Chain 6. Shutter Motor 7. Manual Chain 8. Remote Sensor Unit
9. Push Button Control Set 10. 90mm Wide "U" Guide Rail 11. Bottom Bar
12. Side Cover Plate 13. Box Covered by 0.80mm Zinc Sheet



- A. Control Unit (Optional) B. Alarm Lamp (Optional) C. Siren (Optional)  
D. Smoke Detector (Optional) E. Fuse Link Cable (Optional)

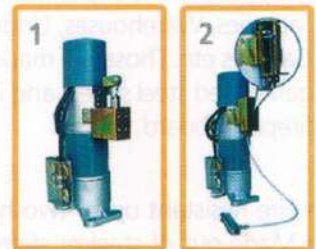


Three Sinha Fire Shutter Doors are designed to prevent the spread of fire and smoke while protecting your property, products and most importantly the lives of people on the premises.

If you currently own a building or commercial property, you will no doubt already know the value of appropriate fire protection.

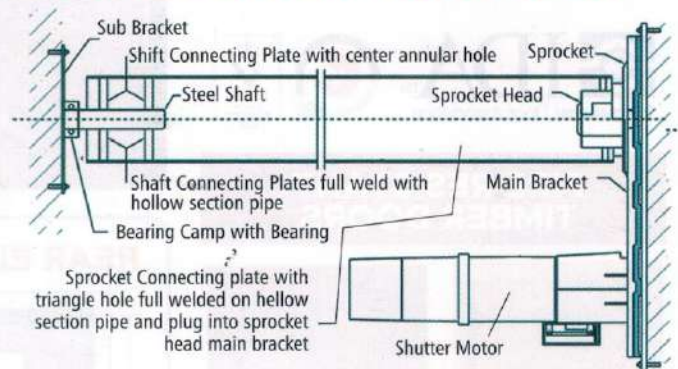
Three Sinha Fire Shutter Doors are suitable for all establishments, but are most effective in high risk areas such as kitchens. Products can offer optimum fire protection ranging from 1 to 2 hours.

## FIRE RESISTANT SHUTTER MOTOR



1 Solenoid Type 2 Fusible Link Type

## BRACKET SPECIFICATION CHART



## THREE SINHA INDUSTRIES (PVT) LTD.

Head Office & Showroom - 0117 65 65 65

448, Nawala Road, Koswatta, Rajagiriya.  
Tel: 2875356, 2865427, 2883621, 2883620  
Fax: 2078058 (Marketing)



www.threesinha.lk  
marketing@threesinha.lk  
threesinha industries  
threesinha industries

### Branches

**Kandy**  
No. 506, Wathuwala, Katugastota, Kandy.  
Hot Line: 0817 65 65 65 Mobile: 0768 768 150  
E-Mail: kandy@threesinha.lk

**Matara**  
769, Galle Road, Madiha, Walgama, Matara.  
Hot Line: 0417 65 65 65 Mobile: 0768 768 700  
E-Mail: matara@threesinha.lk

Hot Line - 0740 65 65 65

**Kottawa**  
318/A, High Level Road, Mahalwarawa, Pannipitiya.  
Hot Line: 0760 65 65 65 Mobile: 0768 768 500  
E-Mail: kottawa@threesinha.lk

**Negombo**  
No 504/1, Colombo Road, Kurana, Katunayaka.  
Hot Line: 0317 65 65 65 Mobile: 0768 768 600  
E-Mail: negombo@threesinha.lk

Trusted name for over 55 years among Sri Lankans

# FIRE SHUTTER



**THREE SINHA INDUSTRIES (PVT) LTD**

Head Office: 448, Nawala Road, Koswatta, Rajagiriya.  
Hotline: 0117 65 65 65 Email: [marketing@threesinha.lk](mailto:marketing@threesinha.lk)



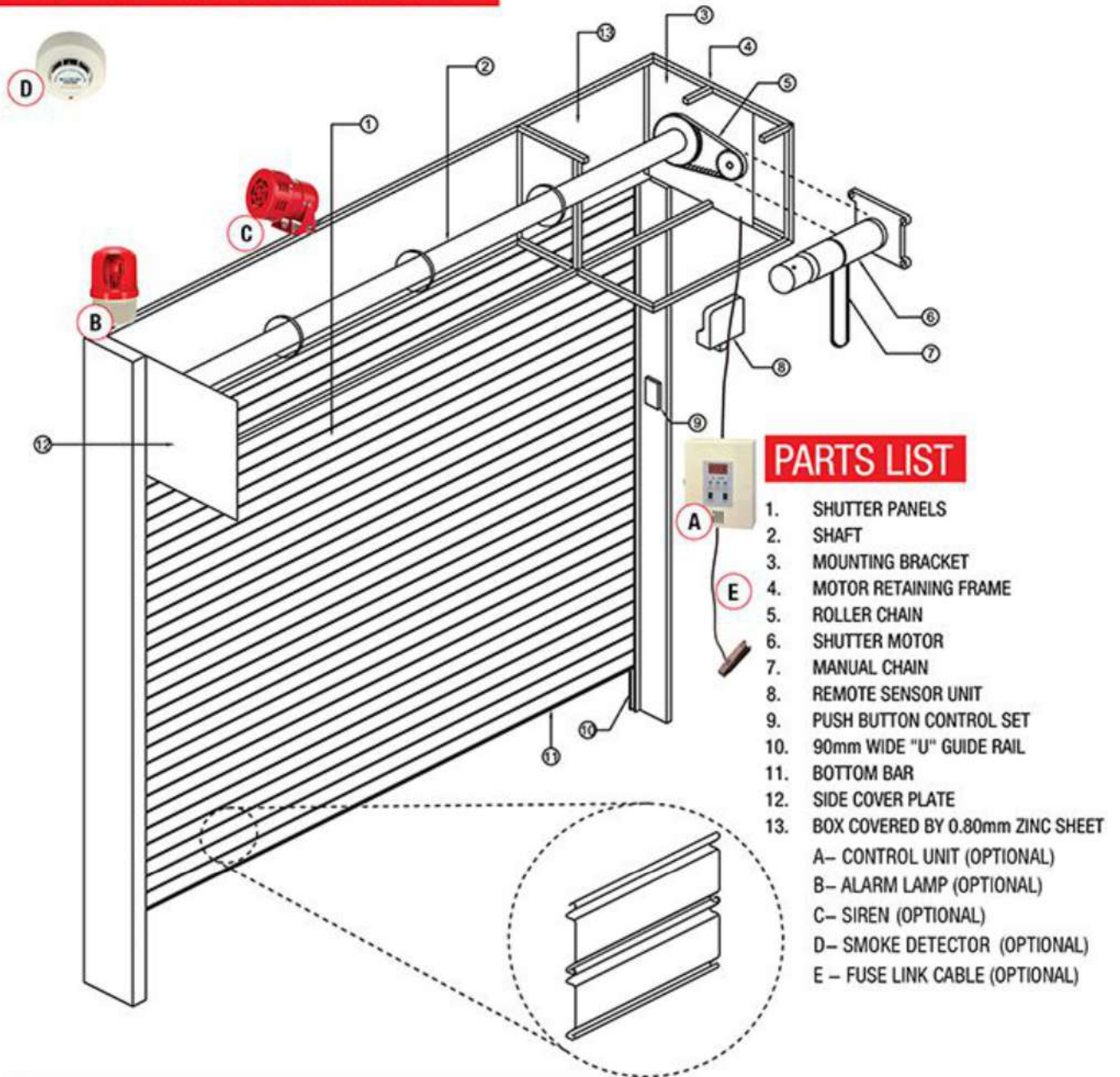
[www.threesinha.lk](http://www.threesinha.lk)

Kandy Branch: 0817 65 65 65

Matara Branch: 0417 65 65 65

Negombo Branch: 0317 65 65 65

# FIRE SHUTTER ASSEMBLY



## PARTS LIST

1. SHUTTER PANELS
  2. SHAFT
  3. MOUNTING BRACKET
  4. MOTOR RETAINING FRAME
  5. ROLLER CHAIN
  6. SHUTTER MOTOR
  7. MANUAL CHAIN
  8. REMOTE SENSOR UNIT
  9. PUSH BUTTON CONTROL SET
  10. 90mm WIDE "U" GUIDE RAIL
  11. BOTTOM BAR
  12. SIDE COVER PLATE
  13. BOX COVERED BY 0.80mm ZINC SHEET
- A- CONTROL UNIT (OPTIONAL)  
 B- ALARM LAMP (OPTIONAL)  
 C- SIREN (OPTIONAL)  
 D- SMOKE DETECTOR (OPTIONAL)  
 E - FUSE LINK CABLE (OPTIONAL)

## BRACKET SPECIFICATION CHART

