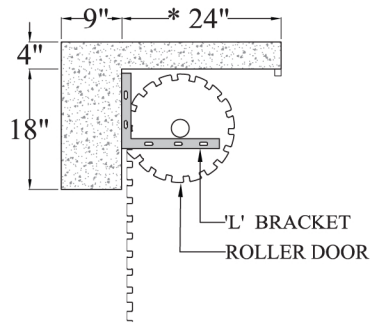




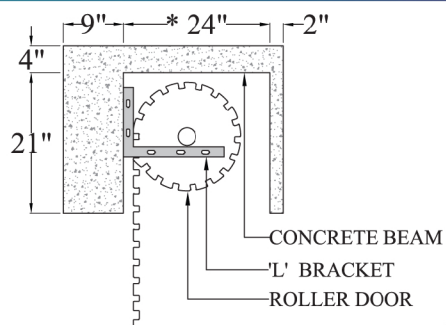
THREE SINHA

ROLLER DOOR STRUCTURE PLAN

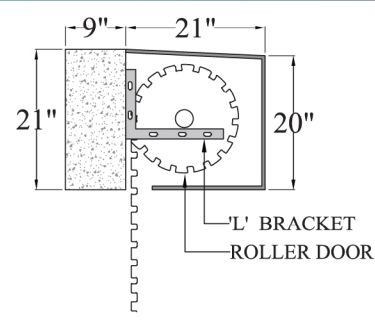
OPTION - 01



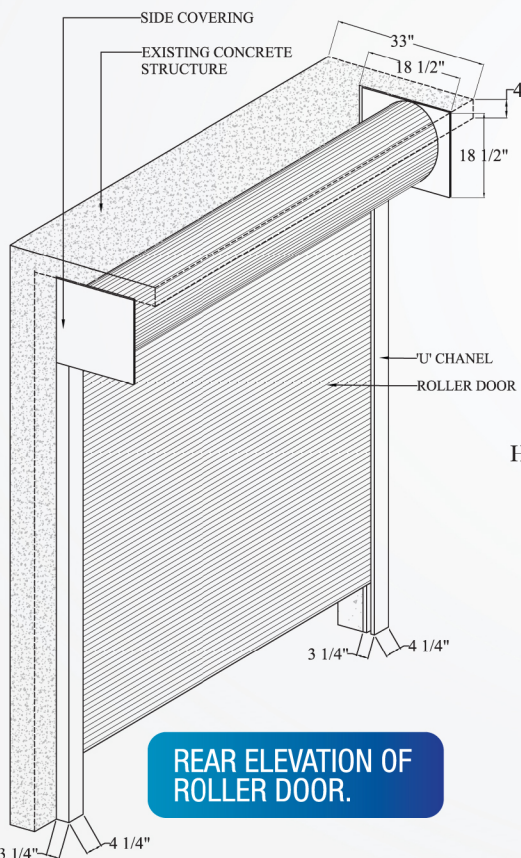
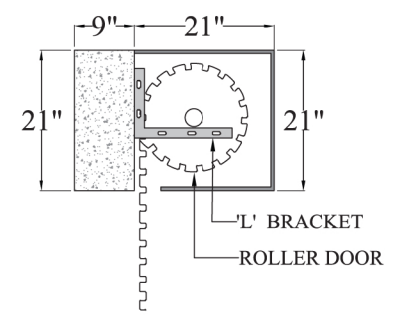
OPTION - 02



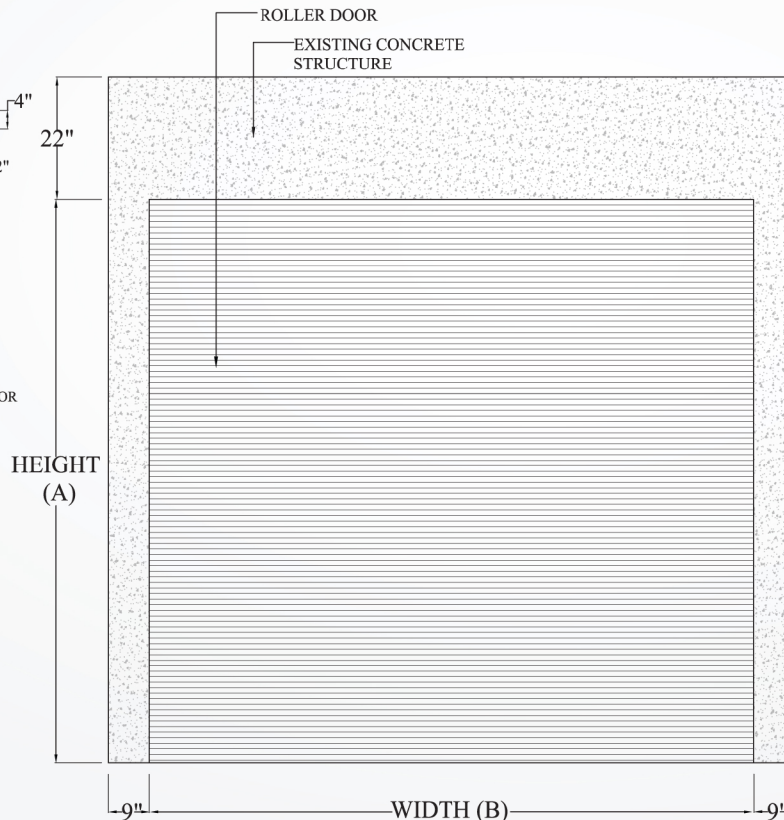
OPTION - 03



OPTION - 04



REAR ELEVATION OF ROLLER DOOR.



FRONT ELEVATION - OPTION 01

SPECIAL NOTES:

- * MAXIMUM OPENING HEIGHT (A) = 40'-0"
- * MAXIMUM OPENING WIDTH (B) = 324 1/2",
 INSIDE = 335 1/2" (WITH 'U' CHANNEL)
 OUT SIDE = 335 1/2" (WITH 'U' CHANNEL)
 ONE SIDE = 335 1/2" (WITH 'U' CHANNEL)
- * OPEN HEIGHT OF THE DOOR PANNEL WILL LESS THAN 2" FROM (A)
- * IF THE MAXIMUM HEIGHT (A) IS MORE THAN 10 FEET THIS DRAWING IS NOT APPLICABLE & IT WILL BE SUBJECTED TO CHANGE ANOTHER STRUCTURE PLAN.



THREE SINHA INDUSTRIES (PVT) LTD

Head Office: 448, Nawala Road, Koswatta, Rajagiriya.
 Hotline: 0117 65 65 65 Email: marketing@threesinha.lk

Kandy Branch: 0817 65 65 65 Matara Branch: 0417 65 65 65 Negombo Branch: 0317 65 65 65

www.threesinha.lk