



THREE SINHA

FOLDING DOOR



■ Shangri-La , One Galle Face

The following materials are compatible with these designs.
Polycarbonate, Perforated and Ventilation.



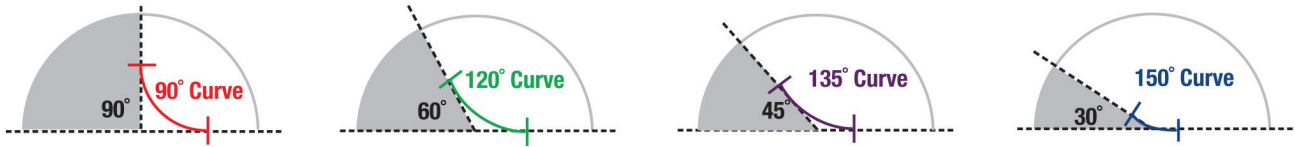
Easy Operation, Choices of Design, Smaller Storage Area

SUITABLE FOR

Clubs, Hotels, Airports, Shopfront, Tenancies, Pharmacies, News agencies
Free Standing Kiosks, Reception Areas

The 4405 mm closure length, can be 550–570mm length when door opened.

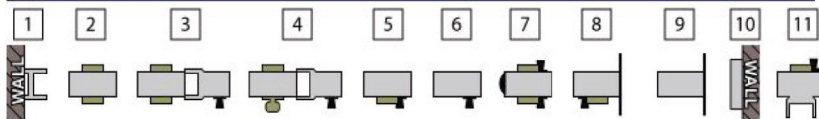
Details: Caurve Details



Outstanding layout designs and thoughtful details are easily achieved with curves.

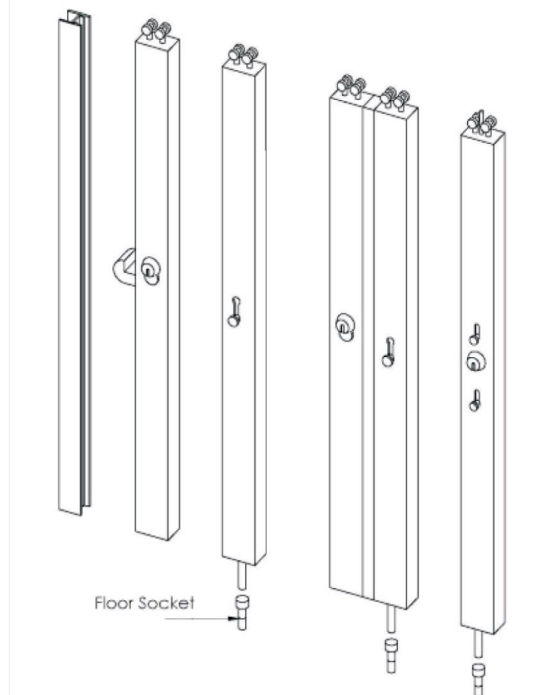
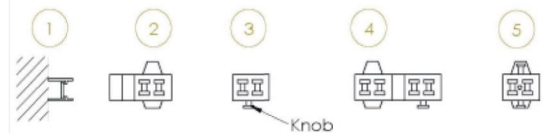
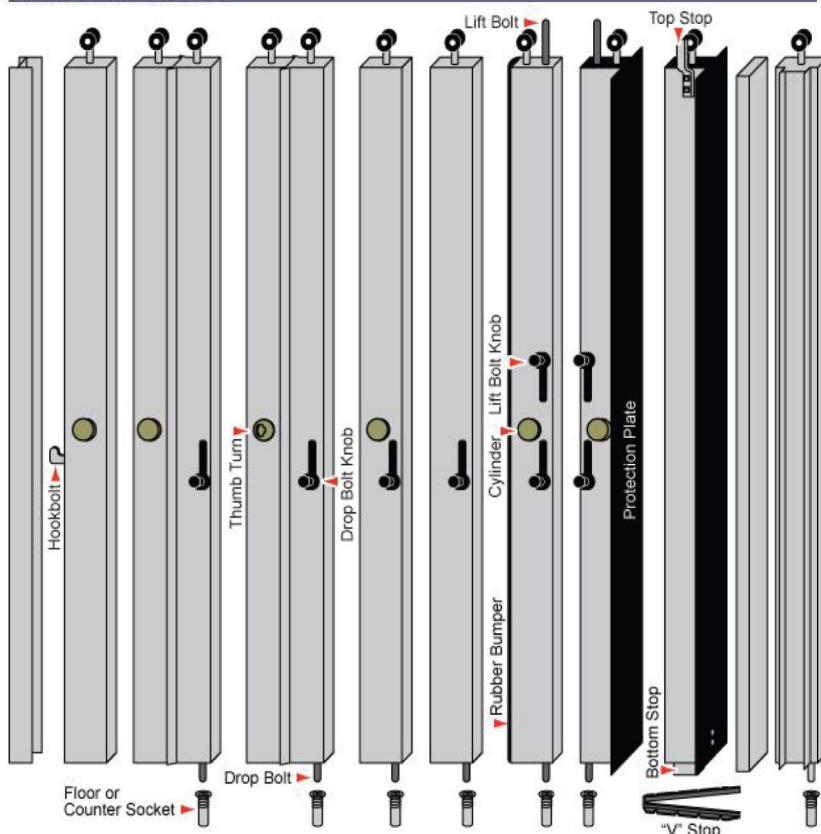
Radius	Curve	Curve Length
10 in. (250mm)	90°	16 in.(410mm)
	120°	10 1/2 in.(270mm)
	135°	7 15/16 in.(200mm)
	150°	5 1/4 in.(130mm)
14 in. (360mm)	90°	22 in.(560mm)

Top View of Posts

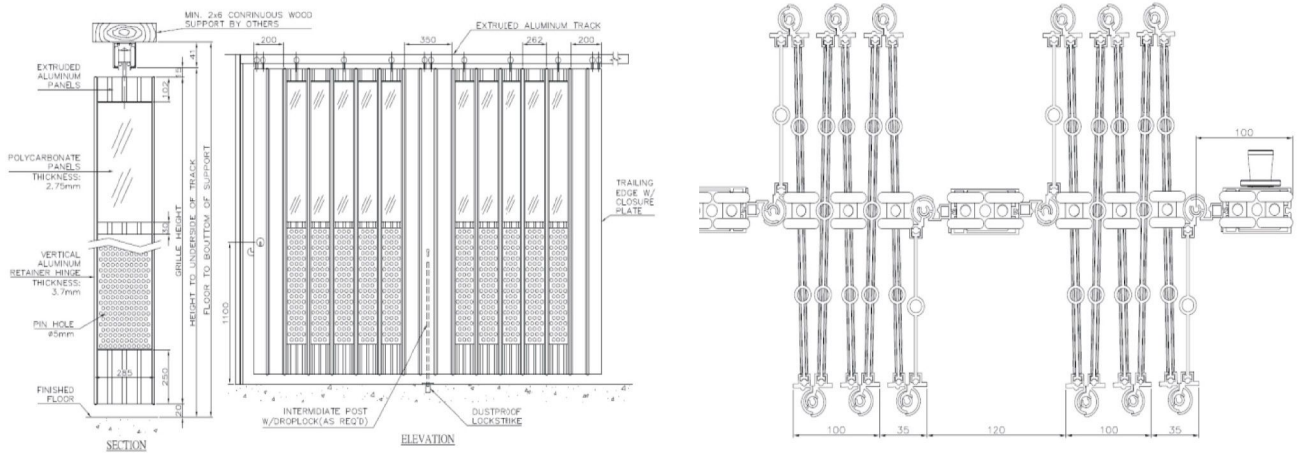


- 1.Wall Channel
- 2.Lead Post-With Cylinders
- 3.Intermediate Post-Without Cylinders
- 4.Bi-Part Egree-With Cylinders Exterior& Interior Thumb Turns
- 5.Top and Bottom Locking Post

Elevation View of Posts



The Folding Door offers visibility and airflow and is suitable for straight line or corner application



RECOMMEND SPECIFICATIONS

The Folding Door shall be as manufactured by Shutter Victech

DOOR PANEL TYPE OPTIONS

Polycarbonate: 3mm

Toughened Glass/; 3mm

Aluminum Solid Panel: 3mm

Ventilation: Perforated 3mm thick aluminum sheeting

(Perforations are multi-hole of 4mm diameter, providing approximately 50% ventilation)

Grill Aluminum round tubes fitted vertically to form a grille patten

OPERATION

Operated manually by hand. The doors can be a single or bi-parting doors which can stack to one side or two sides as required. Refer to technical data sheets stacking spaces.

TRACK SYSTEM

An Overhead Track System is used. Single and double trolley rollers fitted with ball bearings are used and slide in an overhead track 41mm x 35mm wide aluminum extrusion. The fitted tracks may have a radius of no less than 600mm to suit curved applications. For elliptical curves, a template must be provided by purchaser.

PANEL SIZES

The Panel sizes are:

SFD 300 is 285mm overall | SFD 200 is 190mm overall | SFD 150 is 148mm overall

All Panels sizes will fold in a concertina style formation.

MAXIMUM SIZES

The Folding Door can be manufactured to a maximum height of 4200mm and can span any width of opening.

LOCKING

The leading posts will be provided with a lock and 2 key cylinders which can be operated from both sides. As standard, the lock is supplied with a "builder's key" which enables the client to change over the cylinder to their own requirements or master keying. The master keying is responsibility of the purchaser or their client. Floor mounted sockets with spring loaded dust caps are included.

FINISH

The standard finish is matt natural anodized aluminum.

COMPACTION/STORAGE POCKET SIZES

Refer to Door Pocket Table

or contact Shutter Victech for further information on your requirements.

Typically the panels will compact to between 11%~18% of the opening size depending on the type of Door Panel used(SFD 300, SFD 200, SFD 150) and the locking post configuration.

WEIGHT

The door weights approx:

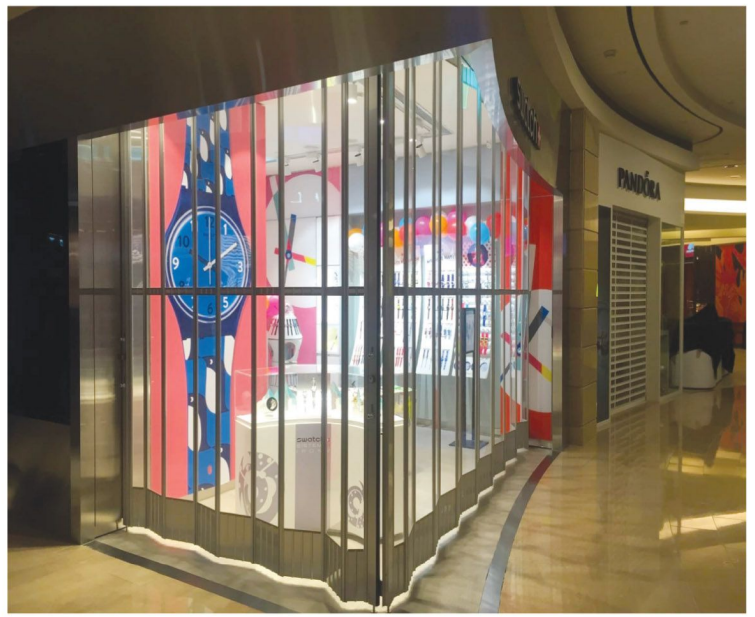
SFD 300 - 12kg/m² | SFD 200 - 14kg/m² | SFD 150 - 16kg/m²

WORK BY OTHERS

Unless otherwise specified:

Preperation of all openings, walls and floors to receive the Folding Door

Provision of structural supports timber or steel, access panels, or any joinery work.



THREE SINHA INDUSTRIES (PVT) LTD

Head Office: 448, Nawala Road, Koswatta, Rajagiriya.

Hotline: 0117 65 65 65 Email: marketing@threesinha.lk



www.threesinha.lk

Kandy Branch: 0817 65 65 65

Matara Branch: 0417 65 65 65

Negombo Branch: 0317 65 65 65